

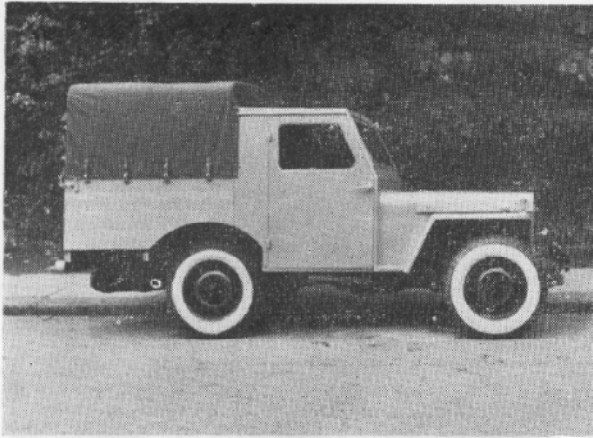
## THE STATION WAGON.

Of all the conversions for which 'Metamet' are so well known, our Station Wagon model is the pride of our fleet. Carefully built upon the sturdy extended jeep chassis giving a 100 inch wheelbase, this vehicle can easily claim to be the only passenger car giving sufficient room and comfort with four wheel drive on the market.

Built with two or four doors, also drop down tailboard or doors at the rear according to requirements. A luxuriously appointed

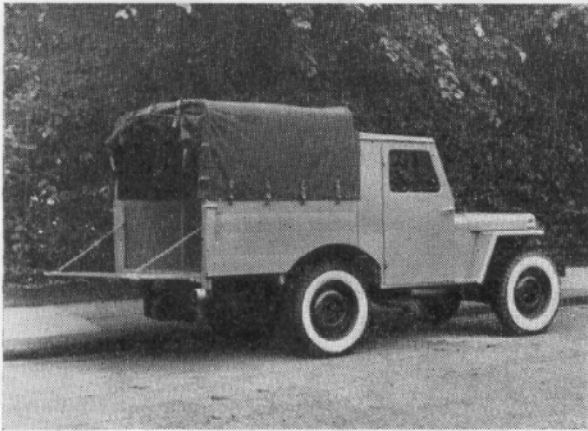
spacious interior makes this vehicle ideally suitable for long journeys, especially where the going occasionally gets rough. Six opening windows permit ample ventilation, both front and back bench type seats, also room for plenty of holiday luggage at the back. The rear seat can be made to fold flat thus providing a 6 feet platform for the carriage of bulky goods or even for sleeping.

We shall be pleased to supply a more detailed description of this attractive model.



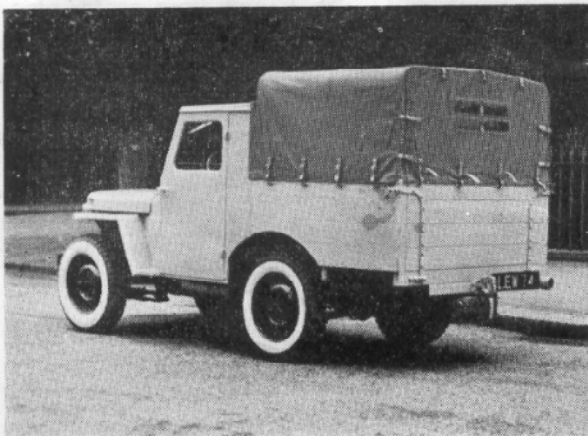
## THE 10 CWT. TRUCK

This model is designed to provide a weatherproof cab, together with the maximum pay load area obtainable on a 80in. chassis. All metal construction to withstand many years of hard work and because of the 4 wheel drive the vehicle can always be relied upon to carry heavy loads over badly surfaced tracks, rough fields or mud that would quickly bring a normal truck to a standstill. Fitted with a full size bench type seat, or two individual seats as required, with or without hoop type hood.



## 20 CWT. LORRY.

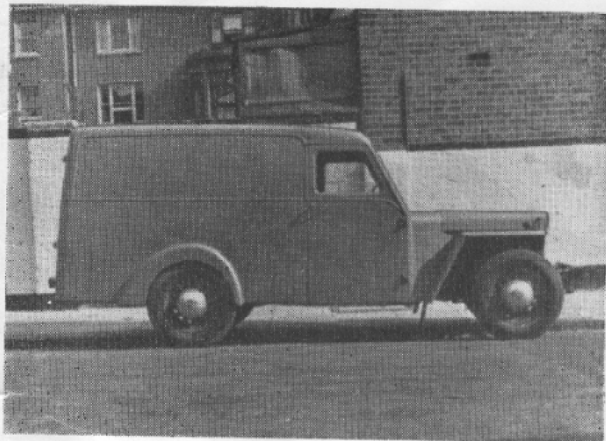
The 20 cwt. LORRY, similar to the above but with the sturdy extended jeep chassis giving 100in. wheelbase with or without hoop type hood.



*Metamet reserve the right to change prices and alter specifications without notice.*

## THE 15 CWT. VAN.

A conventional van so far as outward appearance goes, but closer inspection reveals the drive to all four wheels, the eight useful gears for all occasions and above all the strength that only a jeep possesses. Most suitable for deliveries where no other van will go.



## THE CARAVANNER.

The 'Caravanner' model introduces the last of the Metamet extended chassis conversions. Considerable greater personal comfort for the occupants is achieved by extending the normal chassis by a further 20 inches, giving a wheel-base of 100 inches.

A full width bench type front seat gives a comfortable ride for three persons, whilst the sprung rear seat enables two more passengers to be carried within the wheelbase.

A choice of hood design is available, either the conventional cabriolet type, or where the vehicle is intended for camping or the carrying of sporting tackle, a hoop type similar to that on the 'Farmer' model frame can be fitted.

Wind-down windows can be fitted in the extra large doors, which together with beautifully built windscreen and generally well appointed interior, places this vehicle which is of unique design, in the luxury sports class.



*Metamet reserve the right to change prices and alter specifications without notice.*



## USEFUL DATA.

VALVE CLEARANCE	.....	.....	.014in. cold.
TIMING:			
Intake opens	.....	.....	9° before top centre flywheel, i.e. 0.039in. piston travel.
Intake closes	.....	.....	50° after bottom centre flywheel, i.e. 3.772in. piston travel.
Exhaust opens	.....	.....	47° before bottom centre flywheel, i.e. 3.779in. piston travel.
Exhaust closes	.....	.....	12° after top centre flywheel, i.e. 0.054in. piston travel.
BORE	.....	.....	3 $\frac{1}{8}$ in. (79.38mm.).
STROKE	.....	.....	4 $\frac{3}{8}$ in. (112.1mm.).
CRANKSHAFT:			
Big end journals, diam.	.....	.....	1.9375in.
Main journals, diam.	.....	.....	2.3340in.
CLUTCH	.....	.....	toggle adjustment 27/32in.
DIFFERENTIAL	.....	.....	pinion and crown wheel clearance .006in. to .008in.
TOW-IN	.....	.....	1/16in.
FRONT WHEEL CAMBER	.....	.....	1 $\frac{1}{2}$ ° on each wheel.
FRONT WHEEL CASTER	.....	.....	3°.
BRAKE SHOE ADJUSTMENT:			
Bottom of shoe	.....	.....	.004in.
Top of shoe	.....	.....	.006in.

